

Martin Luther King Jr., Charter School of  
Excellence

---

649 State Street,  
Springfield, MA 01109

**Annual Report  
2006-2007**

# Martin Luther King Jr., Charter School of Excellence

## Table of Contents

<b>1. School Address/Contact Information.....</b>	<b>4</b>
<b>2. Introductory Description of the School .....</b>	<b>4</b>
<b>3. Letter from Chair of the Board of Trustees .....</b>	<b>4</b>
<b>4. School Mission Statement .....</b>	<b>5</b>
<b>5. Summary of Educational Philosophy .....</b>	<b>5</b>
<b>6. Summary of Internal Assessment Results .....</b>	<b>6</b>
Kindergarten DRA Scores – 2007 .....	8
First Grade DRA Scores - 2007 .....	8
Second Grade DRA Scores - 2007 .....	9
Kindergarten DIBELS Letter Naming.....	9
Math Achievement .....	11
Grade 1 Unit 4: Simple Surveys and Data Sets .....	11
Grade 1 Unit 4: Simple Surveys and Data Sets .....	12
Math Achievement .....	13
Grade 2 Unit 5: Patterns, Tables, Simple Ratios.....	13
<b>7. Number of Instructional Days.....</b>	<b>14</b>
<b>8. List of Members of the Board of Trustees with Details as Defined.....</b>	<b>14</b>
<b>9. Summary of Major Policy Decisions made by the Board of Trustees ....</b>	<b>17</b>
<b>10. Charter Amendments Approved by the Commissioner or Board of Education.....</b>	<b>17</b>
<b>11. Summary of Official Complaints .....</b>	<b>17</b>
<b>12. Student Demographics.....</b>	<b>18</b>

<b>13. Total Number of Student Applications Received .....</b>	<b>18</b>
<b>14. Student Attrition Data .....</b>	<b>19</b>
<b>15. Number of Students who have been Expelled and who have served In-School and/or Out-Of-School Suspensions.....</b>	<b>20</b>
<b>16. Name of School Leader(s), Including Instructional Leader(s) .....</b>	<b>20</b>
<b>17. Summary of Classroom Teacher Qualifications .....</b>	<b>21</b>
<b>18. Teacher Attrition .....</b>	<b>22</b>
<b>19. Financial Statement for Fiscal Year 2007.....</b>	<b>23</b>
<b>20. Balance Sheet Setting Forth the Charter School’s Assets, Liabilities, and Fund Balances or Equities.....</b>	<b>24</b>
<b>21. Approved School Budget for Fiscal Year 2008 .....</b>	<b>25</b>

**Note: The following sections have been omitted from the Annual Report because no data exists for Martin Luther King, Jr. Charter School of Excellence as a first year school.**

- **Summary of Performance Relative Accountability Plan Goals**
- **Summary of External Standardized Test Results**
- **NCLB Report Card**

## **1. School Address/Contact Information**

Martin Luther King, Jr. Charter School of Excellence  
649 State Street, Springfield, MA 01109  
413-214-7806 Telephone  
413-214-7838 Fax  
[info@mlkcs.org](mailto:info@mlkcs.org) Email  
No website

Executive Director: Alan M. Katz  
Director of Education: Jamel Adkins-Sharif

## **2. Introductory Description of the School**

Martin Luther King, Jr. Charter School of Excellence opened in Springfield in September, 2006. During this first year, MLK Charter School had 180 students in kindergarten through 2<sup>nd</sup> grades. The school's enrollment cap will increase from 180 students at the rate of 60 students per year, reaching full enrollment as a 360-student, K-5 school for the 2009-2010 school year.

## **3. Letter from Chair of the Board of Trustees**

June 30, 2007

Commissioner David P. Driscoll  
Massachusetts Department of Education  
350 Main Street  
Malden, MA 02148

Dear Commissioner Driscoll:

2006-2007 was the first operational year for Martin Luther King, Jr. Charter School of Excellence. The founding group and board of trustees' years of dreaming, planning, preparation, and hard work came to fruition. On August 7, 2006, the faculty joined the administration for three weeks of pre-opening professional development. They built their beloved community and met the students and their families at open houses. The students started school on September 5, 2006.

All members of our school community strive to build Dr. King's beloved community. Throughout every school day and throughout the school building, adults are helping children understand and live the Dr. King values. The children made tremendous progress toward their goals of academic excellence and character development.

The board of trustees is pleased with the school's organizational structure, curriculum, and instructional methods. The first year brought no significant changes in the philosophy of the school. The first year

was marked by constant fine tuning of the school program to better achieve the mission.

Trustees have had the great pleasure this year of visiting MLK Charter School and experiencing the school culture that we envisioned: friendly, loving, very positive, and respectful with high standards and expectations throughout. We are impressed by and proud of the students and the staff.

Sincerely,

*Lisa Beth Wilkins Baker*

Lisa Beth Wilkins Baker

#### **4. School Mission Statement**



MARTIN LUTHER KING, JR. CHARTER SCHOOL OF EXCELLENCE

Mission Statement

*"Intelligence plus character – that is the goal of true education."*  
Martin Luther King, Jr.

Martin Luther King, Jr. Charter School of Excellence prepares kindergarten through 5<sup>th</sup> grade students of Springfield for academic success and engaged citizenship through insistence on rigorous, challenging work. The school incorporates Dr. King's commitment to the highest standards in scholarship, civic participation and the ideal of the beloved community.

#### **5. Summary of Educational Philosophy**

MLK Charter School students will achieve academic excellence, be prepared for engaged citizenship, and strive to create beloved community. Martin Luther King's life and values are fundamental to the school's culture. Our Dr. Martin Luther King, Jr. Curriculum: Building a Beloved Community is the core of the school's culture. We address such concepts as individual responsibility, respect for human dignity, and equal opportunity. From kindergarten through 5<sup>th</sup> grade, the children will develop their character through the literature-based Dr. King curriculum, its community-service-learning component, the monthly Dr. King values, and our frequently articulated goal of building a beloved

community. As Dr. King wrote, "Intelligence plus character – that is the goal of true education."

MLK Charter School will achieve its academic learning goal of excellence in scholarship through a schedule that includes lengthy daily periods of both English language arts (reading, writing, and oral) and mathematics, and a school-wide early afternoon reading period. The curriculum also includes social studies and a hands-on science program. Music, art, computer skills, Spanish and fitness instruction flows from our desire to motivate all students and provide a well-rounded education. Students will devote the last part of the afternoon to consolidating the day's learning in English language arts and mathematics and receiving extra instruction in the subject which will most benefit the child.

The school will remain a small school with class size that allows all children to feel a sense of belonging and to support and encourage each other in their individual goals toward a personal best. Each class will have a highly qualified teacher and teaching partner. The instructional method is constructivist pedagogy. In this method, teachers support the natural learning process in which students construct knowledge from their experience by structuring learning activities based on the big ideas or concepts. MLK Charter School implements program strategies that show the greatest gains for students: 1) quality implementation, leadership and accountability; 2) academically demanding curriculum; 3) family involvement; 4) individualized supports for students; and 5) community involvement.

MLK Charter School, its students, and their parents and guardians support a culture of high expectations, a commitment that all of the children will successfully learn and develop their character.

## **6. Summary of Internal Assessment Results**

### **Report on Achievement in Reading and Math Board of Directors Meeting 6/27/07**

#### **Key Charter Promises**

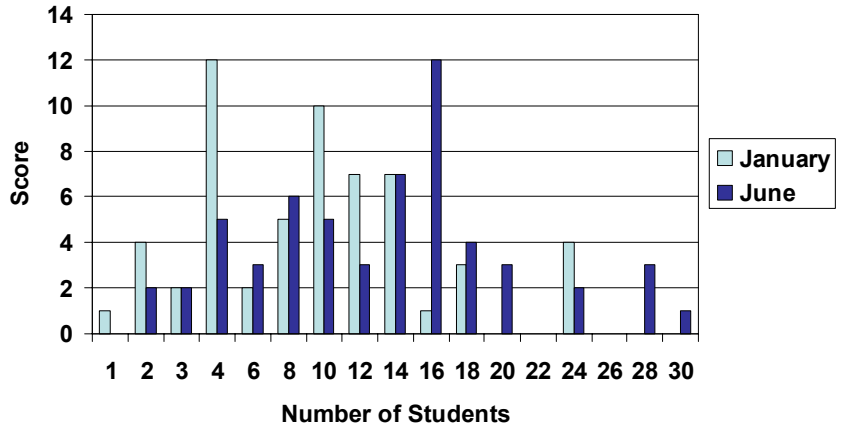
- Academic Excellence
- Responsible and Engaged Citizenship
- Share Ideals of Beloved Community

#### **Reading Achievement**

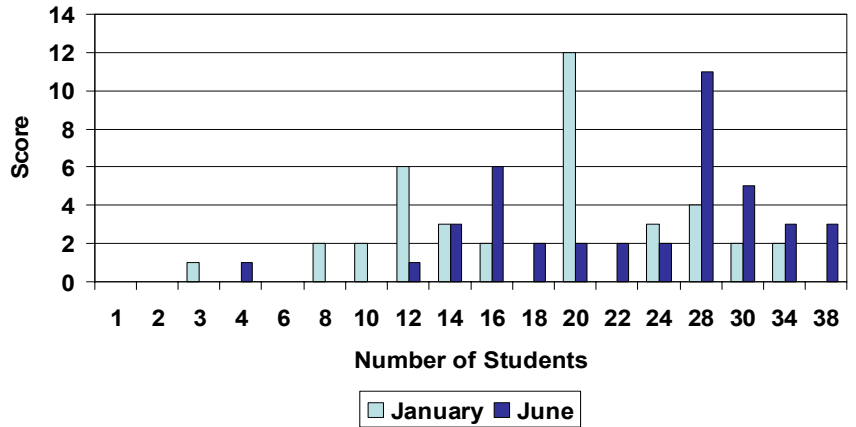
- Developmental Reading Assessment (DRA) administered by reading teachers in January and June for grades 1 and 2, and in June for kindergarten.

•Dynamic Indicators of Basic Early Literacy Skills (DIBELS) was administered in December and May for grades K-2.

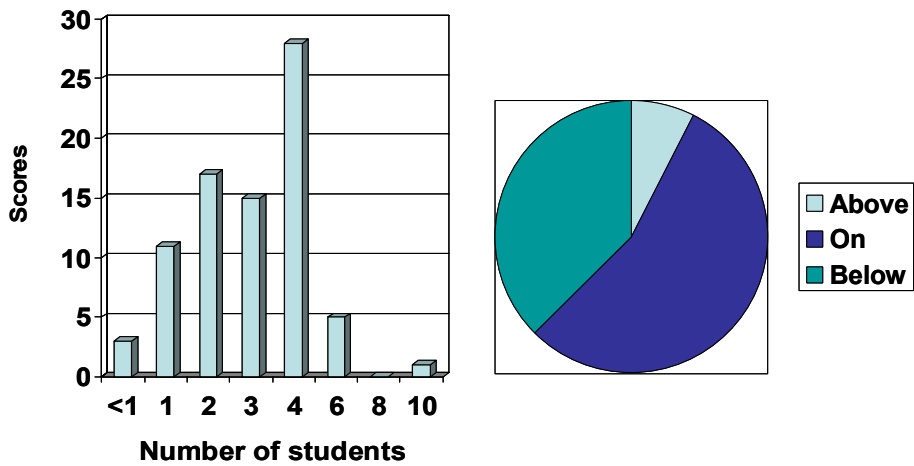
**First Grade DRA Scores January - June**



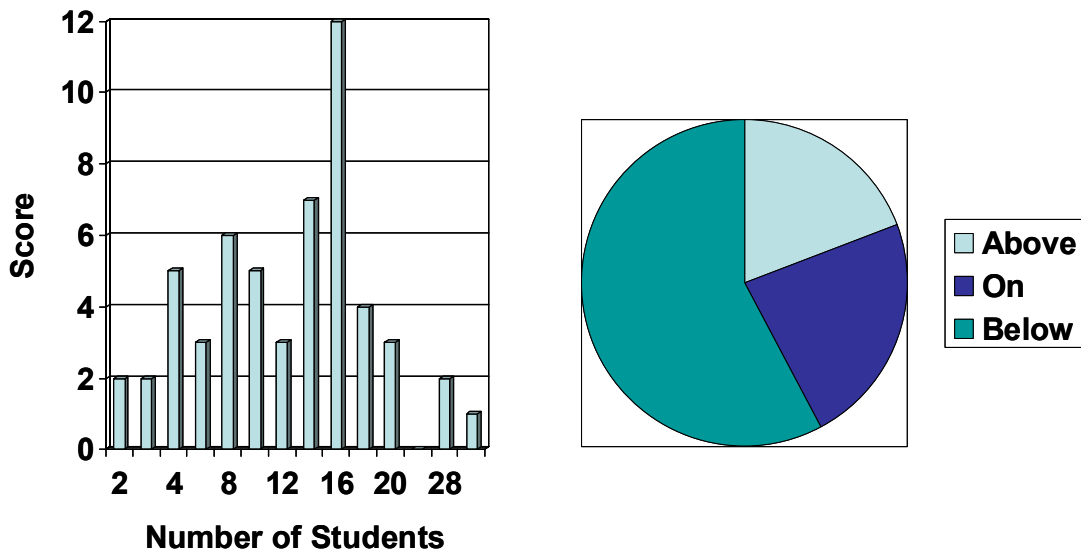
**Second Grade DRA Scores January - June**



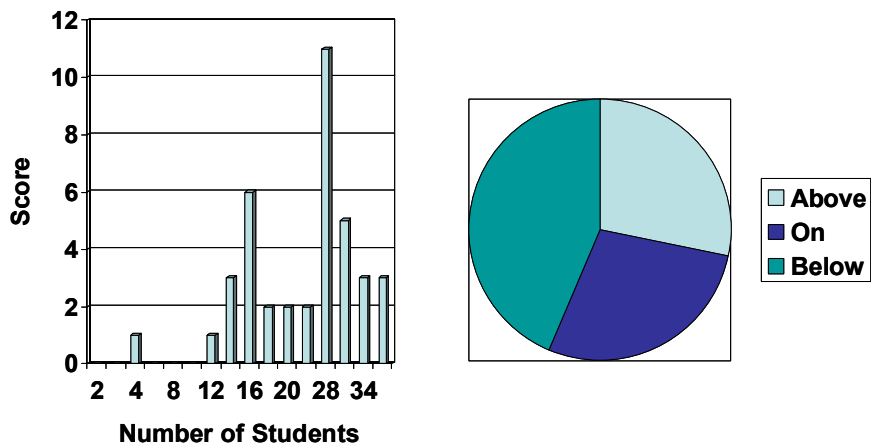
### Kindergarten DRA Scores – 2007



### First Grade DRA Scores - 2007

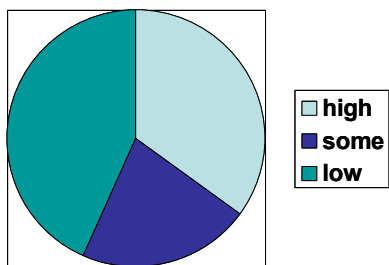


**Second Grade DRA Scores - 2007**

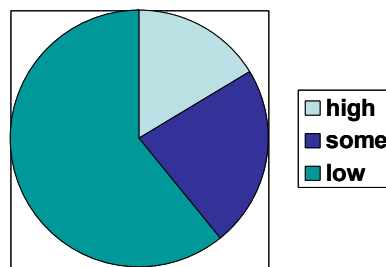


**Kindergarten DIBELS Letter Naming**

**December 2006  
level of risk**

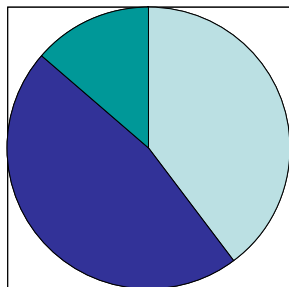


**May 2007  
level of risk**

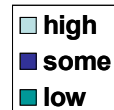
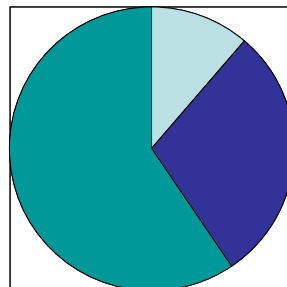


**Kindergarten DIBELS Phonemic Segmentation**

**December 2006  
level of risk**

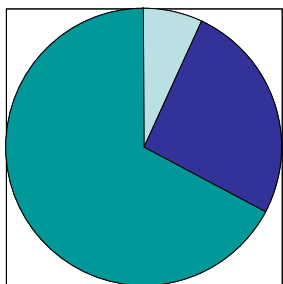


**May 2007  
level of risk**

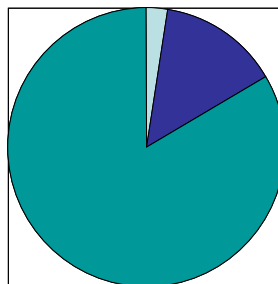


**First Grade DIBELS Phonemic Segmentation**

**December 2006  
level of risk**



**May 2007  
level of risk**

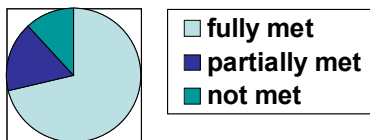


## Math Achievement

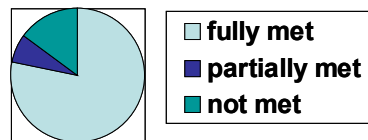
- Data from classroom assessments of *Investigations* units 3-5 in first grade.
  - Unit 3: counting/numbers to 65 and basic addition and subtraction
  - Unit 4: sorting by attributes, comparing data sets, simple surveys
  - Unit 5: measurement with standard and non-standard units

### Grade 1 Unit 3: Numbers, Addition, Subtraction

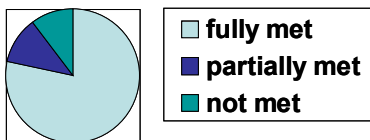
#### Classroom A



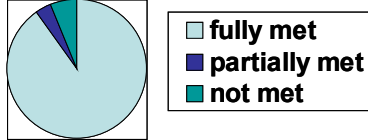
#### Classroom B



#### Classroom C

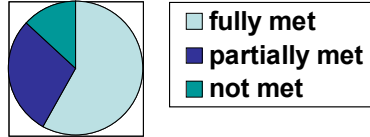


#### Classroom D

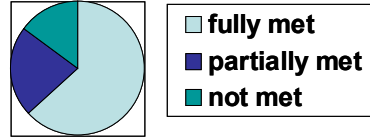


**Grade 1 Unit 4: Simple Surveys and Data Sets**

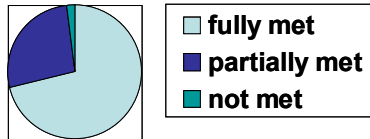
**Classroom A**



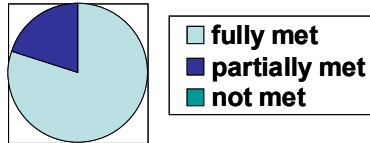
**Classroom B**



**Classroom C**

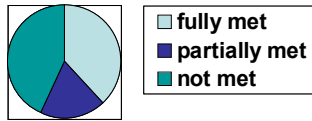


**Classroom D**

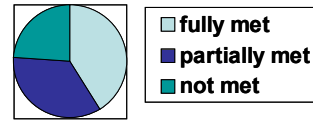


**Grade 1 Unit 5: Measurement**

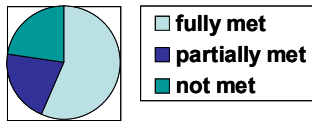
**Classroom A**



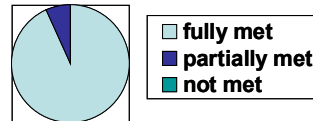
**Classroom B**



**Classroom C**



**Classroom D**

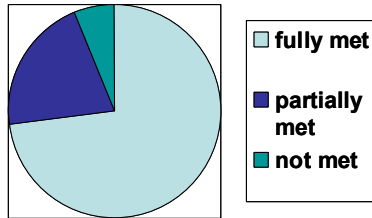


## Math Achievement

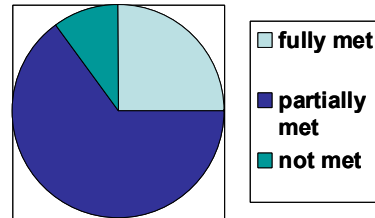
- Data from classroom assessments of *Investigations* units 3-5 in second grade.
  - Unit 4: Venn diagrams, order & describe data sets, high/low values and mode
  - Unit 5: patterns of numbers in tables, ratios, extending patterns
  - Unit 6: addition and subtraction equations, multiples of 10, counting by 2's, 5's, and 10's.

### Grade 2 Unit 4: Categorize/Describe Data Sets

**Classroom A**

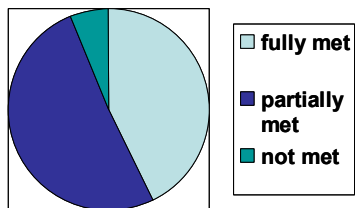


**Classroom B**

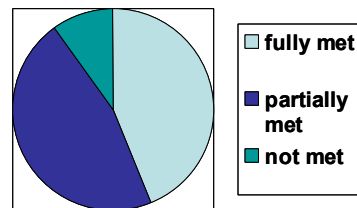


### Grade 2 Unit 5: Patterns, Tables, Simple Ratios

**Classroom A**

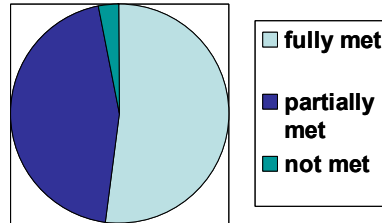


**Classroom B**

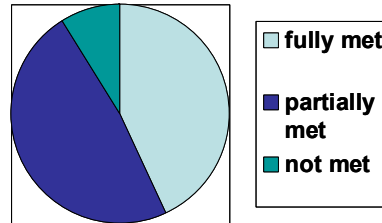


## Grade 2 Unit 6: Add, Subtract, Numbers to 100

**Classroom A**



**Classroom B**



### 7. Number of Instructional Days

2006 – 2007 School Year

180 days in session (9/5/06 to 6/18/07)

### 8. List of Members of the Board of Trustees with Details as Defined

Board Member Name	Employer/Expertise	Position Held	Term of Appointment	Term Expiration	Committee Service
Baker, Lisa	Governance experience, legal skills (including analysis & children's legal issues), advocacy, drafting	Chairman	1 <sup>st</sup> Term	12/31/2007	Executive Committee, Chair Governance Committee
Brown, Bob	Retired teacher, guidance counselor, administrator and most recently a Springfield elementary principal		2 <sup>nd</sup> Term	Resigned 4/30/2007	
deSousa, Beth	C.P.A.	Treasurer	1 <sup>st</sup> Term	12/31/2007	Executive Committee Finance Committee, Chair Funds Development Committee

Feliciano, Armando	Has experience in education, human services, and non-profit administration and governance as well as community work		1 <sup>st</sup> Term	Resigned	
Gianesin, Joseph	Experience as a school social worker and principal, Springfield College social work professor	Vice President	1 <sup>st</sup> Term	12/31/2007	Executive Committee Governance Committee, Chair
Harrison, Anne	Professor of education. Experience as an elementary school teacher and VP for academic affairs at Elms College		1 <sup>st</sup> Term	12/31/2007	Finance Committee Academic Excellence Committee, Chair
Holmes, Beverly	Has management, finance, development and governance skills, Senior VP for Mass. Mutual		1 <sup>st</sup> Term	Term ended 12/31/2006	
Irizarry, Jason	Former Springfield College education professor, postdoctoral fellow in the Teachers for a New Era Project at University of Connecticut		1 <sup>st</sup> Term	Term ended 12/31/2006	
Jordan, Denise	Has fundraising and governance experience in non-profits, civil rights officer for the MA Executive Office of Health & Human Services	Clerk	1 <sup>st</sup> Term	12/31/2007	Executive Committee Human Resources Committee, Co-Chair
Pesce, Gus	Former school superintendent, psychology and education professor and directs special education training at American International College		1 <sup>st</sup> Term	12/31/2007	Facility Committee
Robinson, Dora	Has management, finance, governance, organizing an education skills, has extensive contacts in Springfield, President/CEO of Martin Luther King, Jr. Community Center		1 <sup>st</sup> Term	12/31/2007	Funds Development Committee
Smith, Myra	VP of human resources and multicultural affairs at Springfield Technical Community College		1 <sup>st</sup> Term	12/31/2007	Human Resources Committee, Co-Chair

Sneed, Tim	Executive at MassMutual Financial Group		1 <sup>st</sup> Term	Resigned	
Stebbins, Marie	Community volunteer active in fundraising and governance for non-profits		1 <sup>st</sup> Term	12/31/2007	Funds Development Committee, Chair
Toledo, Hector	Has board experience with the United Way and other community organizations, VP and director of retail sales for Hampden Bank		1 <sup>st</sup> Term	Term Ended 12/31/2006	Facility Committee
Waldoch, Terez	Retired elementary school teacher and administrator, most recently principal of a Springfield elementary school		1 <sup>st</sup> Term	12/31/2007	Human Resources Committee Academic Excellence Committee
Arce, Miguel	Administrator and educator with extensive experience in building and leading community based human service organizations, adjunct social work professor at Springfield College		1 <sup>st</sup> Term	12/31/2009	Funds Development Committee
Rucks, Karen	Minister, former Executive Director of the Council of Churches of Greater Springfield, experience in human resource, labor relations and public administration		1 <sup>st</sup> Term	12/31/2009	Facility Committee
Jones, Kisha	Attorney with legal skills including children and family law		1 <sup>st</sup> Term	12/31/2009	Governance Committee
Gasque, Carol	Experience in accounting and finance for the Center for Human Development		1 <sup>st</sup> Term	12/31/2009	Finance Committee
Degazon, Janet	Experience in information technology (IT) and information systems organization (ISO) with MassMutual		1 <sup>st</sup> Term	12/31/2009	Finance Committee

## **9. Summary of Major Policy Decisions made by the Board of Trustees**

The 2006-2007 school year was the year for the Board of Trustees to make the transition from founding board to governing board. At a board retreat on February 13, 2007, a consultant helped the board measure its progress to date and chart its course for the remainder of the fiscal year.

In January, five new trustees joined the board, a significant milestone in the transition to governing board. The new trustees are: Miguel Arce, Karen Rucks, Kisha Jones, Carol Gasque, and Janet Degazon. The board re-elected its officers in recognition of the successful opening of MLK Charter School, to maintain stability, and reaffirm the board's commitment to the mission of the school during the transition. The officers are: Lisa Baker, chair; Joseph Giansin, vice chair; Beth deSousa, treasurer; and Denise Jordan, clerk.

The school and fiscal year ended with positive indications about the board's leadership. The Massachusetts Department of Education approved the board-approved accountability plan for MLK Charter School. The board evaluated favorably the executive director's leadership and job performance in light of the school's financial position, staff retention, student academic progress, and creation of the school culture envisioned in the charter. The board working with the Friends of Martin Luther King, Jr. Charter School of Excellence identified a long-term facility for the school, moved toward the purchase of the building, and prepared for a capital campaign.

## **10. Charter Amendments Approved by the Commissioner or Board of Education**

The Commissioner of the Department of Education approved a charter amendment to change the school year from 185 days to 180 days.

## **11. Summary of Official Complaints**

There were no official complaints during FY 2007.

## 12. Student Demographics

Race/Ethnicity	Kindergarten	Grade 1	Grade 2	Total	
Hispanic	33	14	14	61	32%
White	22	12	10	44	23%
African American	54	47	29	130	68%
White & African American	6	2	2	10	5%
White & African American & Native Hawaiian	1	0	1	2	
African American & American Indian	0	1	0	1	
American Indian/Alaska Native	2	2	0	4	
<b>Gender</b>					
Female	41	31	21	93	49%
Male	44	33	21	98	51%
<b>Low Income Status</b>	70	57	33	160	84%
<b>Special Education Services</b>	10	8	5	23	12%
<b>ELL</b>	0	0	0	0	

## 13. Total Number of Student Applications Received

	Kindergarten	Grade 1	Grade 2	Total	
Student Applications Received	207	148	99	454	
Enrollment	85	64	42	191	

## 14. Student Attrition Data

	Kindergarten	Grade 1	Grade 2	Total	
Withdrawals (during the school year)	3	4	2	9	5% of total enrollment
Completed the 2006-2007 school year but not returning as of 7/1/07	7	3	2	12	6% of total enrollment

### Summary of Reasons for Total Student Withdrawals

Student birth date did not meet eligibility requirement for kindergarten enrollment	5 %
Parent desired student to be enrolled in same school as older sibling(s)	10%
Student need required a day or specialized program	23%
Parent desired student to be enrolled in a K - 12 school	14%
Family moved out of state	14%
Enrolled sibling withdrawn for one of the reasons stated above	14%
Unknown reason for withdrawal	19%

**15. Number of Students who have been Expelled and who have served In-School and/or Out-Of-School Suspensions**

	Kindergarten	Grade 1	Grade 2	Total
<b>Number of Students Expelled</b>	<b>0</b>	<b>0</b>	<b>0</b>	<b>0</b>
<b>Number of In-School Suspensions</b>	<b>0</b>	<b>0</b>	<b>0</b>	<b>0</b>
<b>Number of Out-of-School Suspensions</b>	<b>44</b>	<b>28</b>	<b>17</b>	<b>89</b>
<b>Number of Students Suspended</b>	<b>16</b>	<b>11</b>	<b>7</b>	<b>34</b>
<b>Summary of Reasons for Suspensions</b>				
Hitting a classmate and/or a teacher				
Defying adult authority				
Sexually inappropriate behavior				
Damaging school property				
Attempting to leave a classroom or the building without permission				

**16. Name of School Leader(s), Including Instructional Leader(s)**

Executive Director: Alan M. Katz

Director of Education: Jamel Adkins-Sharif

## 17. Summary of Classroom Teacher Qualifications

Teacher Qualifications	Number	Percentage
Number of Highly Qualified Classroom Teachers	<b>6</b>	<b>60%</b>
Number of Highly Qualified Specials Teachers: Literacy, Special Education, Art, Music, Technology, Physical Education, Spanish, Floating Substitute	<b>6</b>	<b>66%</b>
Number of teachers with an earned master's degree	<b>16</b>	<b>84%</b>
Number of teachers with Massachusetts licensure	<b>15</b>	<b>78%</b>
Number of Highly Qualified Teaching Partners Note: All have an earned bachelors degree	<b>9</b>	<b>100%</b>
FTEs Teachers	<b>18.1</b>	
FTEs Teaching Partners	<b>9.0</b>	
Classroom teachers average years of teaching experience	<b>2.25 years</b>	
All teachers (including specials) average years of teaching experience	<b>5 years</b>	
Average years at MLKCSE <i>Note: The school has operated for only one year.</i>	<b>1 year</b>	
Average class size	<b>18 students</b>	

## 18. Teacher Attrition

<b>Teacher Attrition</b>	<b>Number</b>	<b>Reason</b>
Number of teachers who have left since the beginning of the school year	<b>1</b>	<b>Health</b>
Number of teachers who completed the year but will not be returning	<b>1</b>	<b>Moved out of state</b>

## 19. Unaudited Financial Statement for Fiscal Year 2007

<b>REVENUES</b>						
STATE SOURCES						
PER-PUPIL REVENUE						\$1,848,220
FEDERAL ENTITLEMENTS & GRANTS						
DEPARTMENT OF EDUCATION						\$380,396
OTHER REVENUE						
FUNDRAISING - FRIENDS OF MLK						\$65,000
OTHER						\$9,188
<b>TOTAL REVENUES</b>						<b>\$2,302,804</b>
<b>EXPENSES</b>						
SALARIES & WAGES						\$1,098,699
FRINGE BENEFITS						\$140,919
CONTRACTUAL CONSULTANTS/SERVICES						\$80,685
PROFESSIONAL DEVELOPMENT						\$47,105
HEALTH SERVICES						\$29,731
INSTRUCTIONAL SUPPLIES/MATERIALS						\$118,806
STUDENT RELATED ACTIVITIES						\$1,868
TESTING & ASSESMENT						\$4,579
TRANSPORTATION						\$1,250
MAINTENANCE & GROUNDS						\$145,296
INSURANCE						\$4,556
DEPRECIATION						\$45,094
RECRUITMENT/ADVERTISING						\$2,480
ADMIN EXPENSE & SUPPLIES						\$45,676
OTHER						\$3,006
<b>TOTAL EXPENSES</b>						<b>\$1,769,749</b>
<b>NET</b>						<b>\$533,055</b>

<b>GRANTS RECEIVED</b>							<b>AMOUNT RECEIVED</b>
DEPARTMENT OF EDUCATION - TITLE I							\$76,081
DEPARTMENT OF EDUCATION - TITLE IIA TEACHER QUALITY							\$20,704
DEPARTMENT OF EDUCATION - SPECIAL EDUCATION							\$39,088
DEPARTMENT OF EDUCATION - SPECIAL EDUCATION IMPROVE/DEVELOP							\$5,500
DEPARTMENT OF EDUCATION - TITLE V							\$623
START UP							\$300,000
TOTAL							\$441,996

**20. Unaudited Balance Sheet Setting Forth the Charter School's Assets, Liabilities, and Fund Balances or Equities**

<b>ASSETS</b>							
			CASH-OPERATING FUNDS				\$566,113
			REVENUE RECEIVABLE				\$39,215
			PREPAID EXPENSES				\$17,453
			EQUIPMENT-CAPITAL				\$164,970
			<b>TOTAL ASSETS</b>				\$787,750
<b>LIABILITIES &amp; FUND BALANCE</b>							
<b>LIABILITIES</b>							
			ACCOUNTS PAYABLE				\$15,491
			ACCRUED EXPENSES				\$140,303
			<b>TOTAL LIABILITIES</b>				\$155,795
			<b>FUND BALANCE</b>				\$631,955
			<b>TOTAL LIABILITIES &amp; FUND BALANCE</b>				\$787,750

## 21. Approved School Budget for Fiscal Year 2008

<b>REVENUES</b>						
STATE SOURCES						
PER-PUPIL REVENUE						\$2,264,467
FEDERAL ENTITLEMENTS & GRANTS						
DEPARTMENT OF EDUCATION						\$375,000
OTHER REVENUE						
FUNDRAISING - FRIENDS OF MLK						\$50,000
<b>TOTAL REVENUES</b>						<b>\$2,689,467</b>
<b>EXPENSES</b>						
SALARIES & WAGES						\$1,601,420
FRINGE BENEFITS						\$332,767
CONTRACTUAL CONSULTANTS/SERVICES						\$110,600
PROFESSIONAL DEVELOPMENT						\$29,000
HEALTH SERVICES						\$39,000
INSTRUCTIONAL SUPPLIES & MATERIALS						\$105,200
STUDENT RELATED ACTIVITIES						\$15,600
TESTING & ASSESMENT						\$6,240
TRANSPORTATION						\$11,000
MAINTENANCE & GROUNDS						\$279,150
INSURANCE						\$13,230
DEPRECIATION						\$50,000
RECRUITMENT/ADVERTISING						\$8,100
ADMIN EXPENSE & SUPPLIES						\$71,080
OTHER						\$17,080
<b>TOTAL EXPENSES</b>						<b>\$2,689,467</b>